

**P & H**

**MUNNA CONSTRUCTION COMPANY PVT. LTD.**

Office Address: Munna Construction Co. Pvt. Ltd. , 277 Shree Balajee Bhawan, Road no 1, Hill View Colony, Dimna, Mango, Jamshedpur, Jharkhand 831018.

Email: [info@munnaconstruction.com](mailto:info@munnaconstruction.com); [mccpl.bsl@gmail.com](mailto:mccpl.bsl@gmail.com)

Phone: +91 9431735332;

Website: [www.munnaconstruction.com](http://www.munnaconstruction.com)



Use table below to determine weight adjustments to conform with local highway regulations. Item #1 or Item #1A is the base figure (total weight). From this Item #1 or #1A deduct "minus" figures or add "plus" figures shown. All figures indicate weight in pounds.

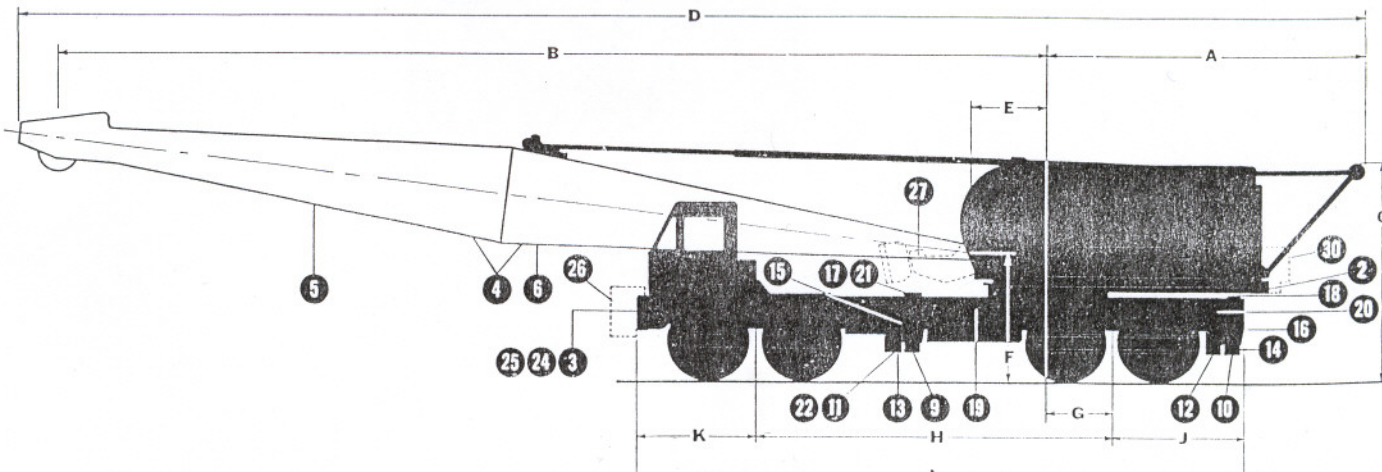
Item No.	Item	Total Weight or Adjustment	Boom Over Front of Carrier		Boom Over Rear of Carrier	
			Front Bogie	Rear Bogie	Front Bogie	Rear Bogie
1	Complete Standard Machine with 50' Boom Lowered to travel position, with single sheave hook block (manual outriggers)	159547	25796	133751	53781	105766
1A	Same as Item #1 Except with Hydraulic Outriggers	162127	26260	135867	54246	107881
<b>EFFECT OF REMOVING</b>						
2	Cast Counterweight	-40450	+12420	-52870	-25850	-14600
3	Single Sheave Hook Block	-750	-1030	+280	+320	-1070
4	50 Ft. Boom with Guy Lines and Spreader	-6620	-11370	+4750	+8960	-15580
5	25 Ft. Boom Upper Section with Guy Lines	-2700	-6970	+4270	+6000	-8700
6	25 Ft. Boom Lower Section with Spreader	-3920	-4400	+480	+2960	-6880
7	Hoist Rope — Spooled on Hoist Drum	0	-760	+760	+760	-760
8	Boom Hoist Rope — Spooled on Boom Hoist Drum	0	-260	+360	+360	-360
9	Front Outrigger Beams with Screws	-3120	-1820	-1300	-1820	-1300
10	Rear Outrigger Beams with Screws	-3120	+1050	-4170	+1050	-4170
11	Front Outrigger Housings	-2320	-1350	-970	-1350	-970
12	Rear Outrigger Housings	-2320	+780	-3100	+780	-3100
13	Front Misc. Manual Outrigger Material	-250	-150	-100	-150	-100
14	Rear Misc. Manual Outrigger Material	-250	+90	-340	+90	-340
15	Front Hydraulic Outrigger Extension Cylinders	-200	-115	-85	-115	-85
16	Rear Hydraulic Outrigger Extension Cylinders	-200	+70	-270	+70	-270
17	Front Hydraulic Outrigger Vertical Cylinders	-960	-560	-400	-560	-400
18	Rear Hydraulic Outrigger Vertical Cylinders	-960	+340	-1300	+340	-1300
19	Four Aluminum Outrigger Floats	-480	-160	-320	-160	-320
20	Rear Frame Section only without Outrigger Housings but with Two Vertical Hydraulic Cylinders, Connecting Pins and Cams	-5120	+1580	-6700	+1580	-6700
21	Front Brackets for Vertical Hyd. Cylinders	-1020	-590	-430	-590	-430
22	Front Frame Outrigger Housing Brackets	-270	-150	-120	-150	-120
	Weight of machine with counterweight removed (manual outriggers).	119,097	38,216	80,881	27,931	91,166
	Weight of machine with counterweight, complete boom and block removed (manual outriggers). (Hoist and boom hoist rope spooled on drums.)	111,727	24,696	87,031	38,331	73,396
	Weight of machine with counterweight, complete boom, complete outriggers, rear frame section, hoist and boom hoist ropes removed.	94,527**	23,316	71,211	37,861	56,666
<b>EFFECT OF ADDING</b>						
23	Boom Backstops	+1520	+1220	+300	-670	+2190
24	Three Sheave Hook Block*	+1300	+1730	-430	-500	+1800
25	Four Sheave Hook Block*	+2130	+2840	-710	-820	+2950
26	Front Bumper Counterweight	+27000	+37000	-10000	+37000	-10000
27	Fairlead	+1090	+330	+760	-130	+1220
28	Tagline Winder	+650	+1100	-460	-880	+1530
29	Power Lowering on Front Drum	+330	+60	+270	+60	+270
29A	Power Lowering on Rear Drum	+324	0	+324	+122	+202
30	Additional Max. Counterweight	+21300	-11100	+32400	+18800	+2500
31	15' Section with Hammerhead Tapered Upper Boom*	+1440	+2950	-1510	-2410	+3850
32	35' Upper Boom Section*	+800	+3090	-2290	-2780	+3580

\*In place of Standard

\*\*Machine weight under 94,000 lbs. may be obtained by removing hoist drum laggings.

Minus figures indicate weights to be deducted from adjusted Item 1 figure at head of its column. Plus figure indicate weights to be added to adjusted Item 1 figure at head of its column.

Boom Length	A	B	C	D	E	F	G	H	J	K	L
50'-0"	18'-4"	54'-0"	13'-1 $\frac{3}{4}$ "	73'-7 $\frac{1}{2}$ "	52"	7'-3 $\frac{1}{2}$ "	42"	19'-2"	7'-4"	76 $\frac{1}{2}$ "	32'-10 $\frac{1}{2}$ "



# 9125-TC

## AXLE LOADINGS

### BOOM LENGTHS, OVERALL LENGTHS, AND AXLE LOADS (IN POUNDS) FOR TRAVELING (BOOM NOT FOLDED) MACHINE WITH MANUALLY OPERATED OUTRIGGERS

Crane Attachment			Total Weight of Machine	Boom Over Front of Carrier Single Sheave Block Fastened to Bumper		Overall Length in Feet	Boom Over Rear of Carrier Single Sheave Hook Block Fastened to Frame		Overall Length in Feet
Boom Length	Insert Lengths	Attach. Weights*		Front Bogie	Rear Bogie		Front Bogie	Rear Bogie	
50'	—	7530	159547	25796	133751	73.9	53781	105766	77.7
60'	10'	8563	160580	29348	131232	83.9	50606	109974	87.7
70'	20'	9155	161172	32453	128719	93.9	47717	113455	97.7
80'	30'	9768	161785	35920	125865	103.9	44474	117311	107.7
90'	20' + 20'	10780	162797	40807	121990	113.9	39957	122840	117.7
100'	20' + 30'	11393	163410	44913	118497	123.9	36075	127335	127.7

\*Crane attachment weights include complete boom, standard hoist line, boom hoist line, guy lines and spreader, less hook block.

### BOOM LENGTHS, OVERALL LENGTHS, AND AXLE LOADS (IN POUNDS) FOR TRAVELING (BOOM NOT FOLDED) MACHINE WITH HYDRAULICALLY OPERATED OUTRIGGERS

Crane Attachment			Total Weight of Machine	Boom Over Front of Carrier Single Sheave Block Fastened to Bumper		Overall Length in Feet	Boom Over Rear of Carrier Single Sheave Hook Block Fastened to Frame		Overall Length in Feet
Boom Length	Insert Lengths	Attach. Weights*		Front Bogie	Rear Bogie		Front Bogie	Rear Bogie	
50'	—	7530	162127	26260	135867	73.9	54246	107881	77.7
60'	10'	8563	163160	29812	133348	83.9	51071	112089	87.7
70'	20'	9155	163752	32918	130834	93.9	48181	115571	97.7
80'	30'	9768	164365	36385	127981	103.9	44939	119426	107.7
90'	20' + 20'	10780	165377	41271	124106	113.9	40422	124955	117.7
100'	20' + 30'	11393	165990	45377	120613	123.9	36539	129451	127.7

\*Crane attachment weights include complete boom, standard hoist line, boom hoist line, guy lines and spreader, less hook block. Note: All of the weights indicated in axle loading tables above are subject to some variation and are for information purpose only.

### TIRE LOAD CHART (LBS.)\*

Tire Size	Allowable Load	
	Front Bogie	Rear Bogie
14:00 x 24 — 24 Ply	47600	95200

\*Loads exceeding those shown above are not recommended for highway travel.

Manufactured and sold in conformance with U.S. Department of Commerce Commercial Standard CS90-58.

Harnischfeger Corporation reserves the right to make changes in specifications without advance notice.

Data published herein is statistical and for information only. Performance may vary with the conditions encountered.

Address inquiries to:

**HARNISCHFEGER**



Milwaukee, Wisconsin 53246



# P & H

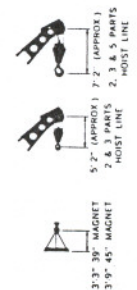
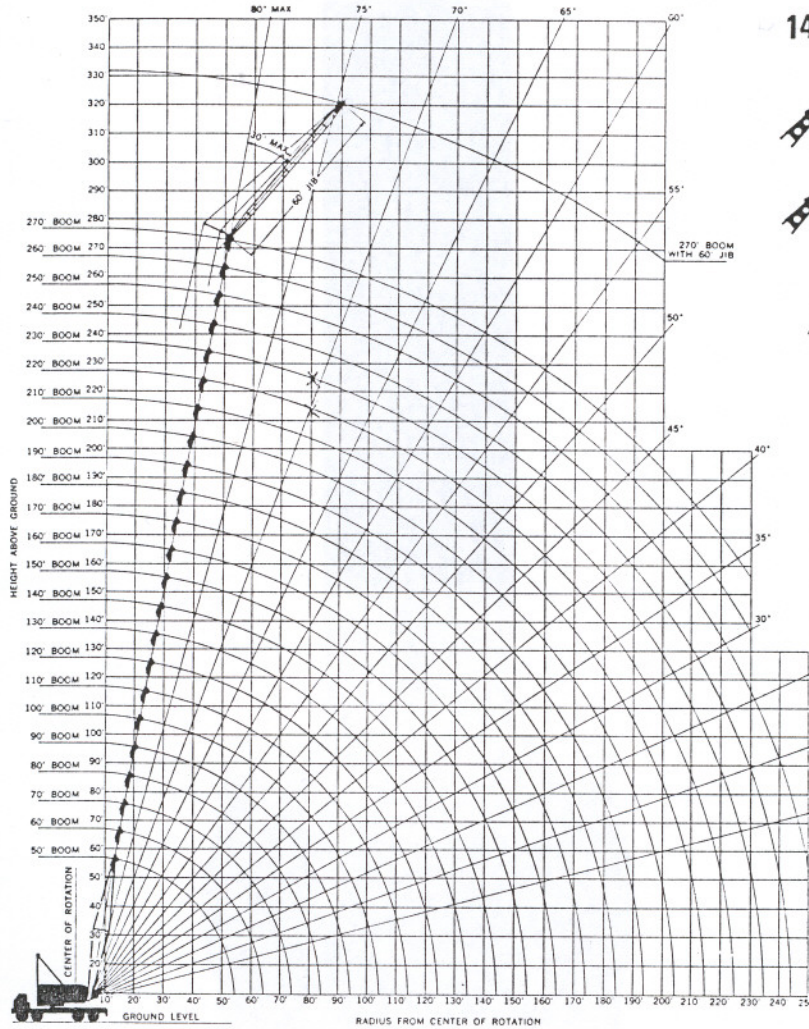
## CRANE SPECIFICATIONS

PCSA CLASS 12-746

# 9125-TC

### 140 TON TRUCK CRANE

OK



MAXIMUM BOOM LENGTHS MACHINE CAN LIFT OFF GROUND with Standard 41,000 Lb. Counterweight				
WITH OUTRIGGERS		WITHOUT OUTRIGGERS		
	Boom Only	Boom & Jib	Boom Only	Boom & Jib
Side	200	180 & 50 Ft.	130	110 & 30 Ft.
Rear	220	200 & 60 Ft.	140	120 & 20 Ft.
Rear Only with Required Bumper Counterweight		250 & 60 Ft.		
with Additional 21,000 Lb. Counterweight (Total 62,000 Lbs.)				
WITH OUTRIGGERS				
		Boom & Jib		
Rear Only with Required Bumper Counterweight		270 & 60 Ft.		

### DRUM SHAFT ASSEMBLY

Crane Laggings (Smooth) (P.D.)	Cable Dia.	Max. Cable Capacity	*Line Pulls	*Line Speeds
Front — 21"	1"	1104 ft.	30800 lbs.	166 f.p.m.
Rear — 21"	1"	1100 ft.	31600 lbs.	166 f.p.m.

\*Line pulls and speeds based on single line and first layer of rope and engine at full load speed.

### MAXIMUM JIB RATINGS

OFFSET ANGLE JIB TO BOOM UNDER FULL LOAD	POUNDS				
	20 Ft. Jib	30 Ft. Jib	40 Ft. Jib	50 Ft. Jib	60 Ft. Jib
10°	30000	20000	16000	13000	10700
20°	25000	18000	14500	11600	9800
30° Max.	23000	17000	13500	11000	9300

Jib crane rating at any radius from center of rotation is the same rating as for main boom when operated at the same radius, but not to exceed maximum jib ratings shown. For bucket ratings on jib deduct 20% from jib ratings. Maximum jib operating radius not to exceed length of main boom on which it is being used. Use of outriggers recommended when boom is equipped with jib.

### HOIST REEVING

No. of Parts of Line	1	2	3	4	5	6	7	8	9	10
Maximum Load — Lbs.	27800	55600	83400	111200	139000	166800	194600	222400	250000	280000

**Ratings Over Side and Rear — Outriggers Fully Extended  
With Standard 41,000 lbs. Counterweight**

**RATED CRANE LOADS IN POUNDS — MAIN BOOM (Drawing 32J45)**

Oper. Rad. Ft.	Angle	40 Ft. Boom		50 Ft. Boom		60 Ft. Boom		70 Ft. Boom		80 Ft. Boom		90 Ft. Boom		100 Ft. Boom		110 Ft. Boom		120 Ft. Boom		130 Ft. Boom		140 Ft. Boom				
		Boom Pt. El.	Rating Lbs.	Angle	Boom Pt. El.	Rating Lbs.	Angle	Boom Pt. El.	Rating Lbs.	Angle	Boom Pt. El.	Rating Lbs.	Angle	Boom Pt. El.	Rating Lbs.	Angle	Boom Pt. El.	Rating Lbs.	Angle	Boom Pt. El.	Rating Lbs.	Angle	Boom Pt. El.	Rating Lbs.		
		WITH OUTRIGGERS																								
12	82	48'-2"	280000	81	58'-0"	280000	..	..	..	..	..	..	..	..	..	..	..	..	..	..	..	..	..			
15	78	47'-5"	211000	78	57'-6"	210500	80	67'-8"	210000	..	..	..	..	..	..	..	..	..	..	..	..	..	..			
20	71	46'-1"	165500	72	56'-3"	165200	75	66'-8"	164900	77	76'-10"	164600	..	..	..	..	..	..	..	..	..	..	..			
25	63	43'-10"	120900	66	54'-4"	120600	70	65'-1"	120300	73	75'-8"	120000	75	85'-10"	119700	77	96'-4"	119400	78	106'-6"	119100	..	..	..		
30	55	40'-11"	89800	60	52'-0"	89500	65	63'-1"	89200	69	74'-1"	88900	71	84'-3"	88600	73	94'-8"	88300	75	104'-3"	88000	77	115'-9"	87700		
35	45	36'-4"	70600	53	48'-8"	70300	59	60'-1"	70000	64	71'-7"	69700	67	82'-3"	69400	70	93'-2"	69100	72	103'-10"	68800	74	114'-5"	68500		
40	34	30'-3"	58300	45	44'-0"	58000	54	57'-2"	57700	59	68'-8"	57400	64	80'-8"	57100	67	91'-6"	56800	69	102'-1"	56500	71	112'-8"	56200		
45	..	..	..	36	37'-10"	49500	47	52'-6"	49200	55	66'-0"	48900	59	77'-3"	48600	63	88'-10"	48300	66	100'-1"	48000	68	110'-8"	47700		
50	..	..	..	24	28'-8"	42750	40	47'-1"	42450	49	61'-5"	42150	55	74'-2"	41850	60	86'-8"	41550	63	97'-9"	41250	65	108'-4"	40950		
60	..	..	..	..	..	..	22	30'-11"	32900	37	50'-8"	32600	46	66'-2"	32300	52	79'-8"	32000	56	91'-6"	31700	60	104'-0"	31400		
70	..	..	..	..	..	..	..	..	..	20	32'-2"	27000	35	54'-5"	26700	43	70'-0"	26400	49	84'-2"	26100	53	96'-5"	25800		
80	..	..	..	..	..	..	..	..	..	..	..	19	34'-5"	22350	32	56'-2"	22050	41	74'-2"	21750	47	89'-1"	21450			
90	..	..	..	..	..	..	..	..	..	..	..	..	..	..	17	35'-10"	18650	31	59'-11"	18350	39	77'-9"	18050			
100	..	..	..	..	..	..	..	..	..	..	..	..	..	..	..	..	..	17	37'-6"	15800	30	63'-5"	15500			
110	..	..	..	..	..	..	..	..	..	..	..	..	..	..	..	..	..	..	..	16	38'-10"	13400	28	64'-8"	13100	
120	..	..	..	..	..	..	..	..	..	..	..	..	..	..	..	..	..	..	..	15	39'-3"	11500	27	67'-5"	11200	
130	..	..	..	..	..	..	..	..	..	..	..	..	..	..	..	..	..	..	..	..	15	41'-9"	9950	26	70'-9"	9650
140	..	..	..	..	..	..	..	..	..	..	..	..	..	..	..	..	..	..	..	..	14	42'-1"	8650	26	70'-9"	8650

Oper. Rad. Ft.	Angle	150 Ft. Boom		160 Ft. Boom		170 Ft. Boom		180 Ft. Boom		190 Ft. Boom		200 Ft. Boom		210 Ft. Boom		220 Ft. Boom		230 Ft. Boom		240 Ft. Boom		250 Ft. Boom		
		Boom Pt. El.	Rating Lbs.	Angle	Boom Pt. El.	Rating Lbs.	Angle	Boom Pt. El.	Rating Lbs.	Angle	Boom Pt. El.	Rating Lbs.	Angle	Boom Pt. El.	Rating Lbs.	Angle	Boom Pt. El.	Rating Lbs.	Angle	Boom Pt. El.	Rating Lbs.	Angle	Boom Pt. El.	Rating Lbs.
		WITH OUTRIGGERS																						
35	78	155'-4"	67300	..	..	..	..	..	..	..	..	..	..	..	..	..	..	..	..	..	..	..	..	
40	76	154'-2"	55000	77	164'-7"	54700	78	174'-11"	54400	79	185'-4"	54100	..	..	..	..	..	..	..	..	..	..	..	
45	74	152'-10"	46500	75	163'-2"	46200	76	173'-8"	45900	77	184'-2"	45600	78	194'-4"	45300	78	204'-2"	45000	..	..	..	..	..	..
50	72	151'-5"	39750	73	161'-8"	39450	74	172'-2"	39150	75	182'-8"	38850	76	193'-0"	38550	77	203'-5"	38250	77	213'-4"	37950	78	223'-9"	37650
60	68	147'-9"	30200	69	158'-0"	29900	71	169'-4"	29600	72	179'-9"	29300	73	190'-3"	29000	74	201'-1"	28700	75	211'-6"	28400	76	222'-2"	28100
70	64	143'-7"	24600	66	154'-8"	24300	67	165'-2"	24000	69	177'-8"	23700	70	187'-10"	23400	71	197'-10"	23100	72	208'-4"	22800	73	218'-10"	22500
80	60	138'-8"	20250	62	150'-1"	19950	64	161'-7"	19650	65	171'-9"	19350	67	183'-8"	19050	68	194'-2"	18750	69	204'-9"	18450	70	215'-6"	18150
90	55	131'-6"	16850	58	144'-2"	16550	60	155'-10"	16250	62	167'-8"	15950	63	178'-1"	15650	65	190'-1"	15350	66	200'-4"	15050	67	211'-2"	14750
100	50	123'-6"	14300	53	136'-4"	14000	56	148'-8"	13700	58	161'-2"	13400	60	173'-2"	13100	61	183'-8"	12800	63	196'-0"	12500	64	206'-3"	12200
110	45	114'-6"	12200	49	129'-4"	11900	52	142'-8"	11600	54	154'-2"	11300	56	166'-3"	11000	58	178'-3"	10700	60	190'-4"	10400	61	201'-2"	10100
120	40	104'-11"	10600	44	119'-9"	10300	47	133'-0"	10000	50	146'-7"	9700	53	160'-3"	9400	55	172'-6"	9100	57	184'-10"	8800	58	195'-2"	8500
130	33	90'-2"	9350	38	106'-10"	9050	42	122'-5"	8750	46	138'-1"	8450	49	152'-0"	8150	51	163'-11"	7850	53	176'-6"	7550	55	188'-10"	7250
140	25	71'-9"	8350	32	93'-2"	8050	37	110'-11"	7750	41	126'-8"	7450	44	140'-7"	7150	47	155'-0"	6850	50	169'-4"	6550	52	182'-2"	6250
150	14	44'-5"	7400	24	73'-5"	7100	31	96'-1"	6800	36	114'-4"	6500	40	130'-6"	6200	43	145'-0"	5900	46	159'-7"	5600	48	172'-1"	5300
160	..	..	..	13	44'-1"	6250	24	77'-7"	5950	30	98'-5"	5650	35	117'-6"	5350	39	134'-6"	5050	42	149'-1"	4750	41	152'-10"	4450
170	..	..	..	..	..	..	13	46'-4"	5130	23	78'-9"	4830	29	102'-0"	4530	34	120'-4"	4230	38	137'-10"	3930	37	141'-0"	3630
180	..	..	..	..	..	..	..	..	..	13	48'-8"	4100	22	79'-6"	3800	29	105'-4"	3500	33	122'-10"	3200	32	125'-1"	2900
190	..	..	..	..	..	..	..	..	..	..	..	12	47'-7"	3140	22	83'-4"	2840	28	107'-0"	2540	27	108'-4"	2240	
200	..	..	..	..	..	..	..	..	..	..	..	..	..	..	12	49'-9"	2370	21	83'-6"	2070	20	83'-7"	1770	

Operating radius is horizontal distance from centerline of rotation to a vertical line through the gravity center of the load. Gross crane ratings shown are for units mounted on P&H crane carrier with dual front and rear axles and do not exceed 85% of tipping loads. Ratings at radii of 20 ft. or less are based on strength of materials. The crane ratings include weight of hook, block, slings, and all other load handling accessories. Ratings with outriggers are based on outriggers extended to a fulcrum point 10'-10" from center of carrier. Ratings without outriggers depend upon proper inflation, capacity, and condition of tires. Areas on plate where no ratings are shown, operation is not intended or approved. Ratings are contingent upon the machine being equipped with the proper P&H boom.

allowable boom length for use with hammerhead is 200 feet. Ratings below heavy line must be reduced by 2000 pounds when using hammerhead. Ratings below heavy line reduced by 1000 pounds when using fine sheave point.\* Booms 230 ft. and over require 2 sheave point (35 ft. tip section), boom foot mast, center hitch, minimum of two 50 ft. boom inserts adjacent to tip section, and front bumper counterweight. When boom is equipped with jib, main hook ratings should be reduced by 1000 lbs. for 20 ft. jib, 1500 lbs. for 30 ft. jib, 2000 lbs. for 40 ft. jib, 2500 lbs. for 50 ft. jib and 3000 lbs. for 60 ft. jib. Boom Backstops recommended for all boom lengths. Ratings are contingent upon freely suspended loads, machine standing on firm, level and uniformly supporting surface. Safe loads depend upon ground conditions, boom length, radius of operation and proper handling, all of which must be taken into account by the user. \*If 3 sheave point is used with 35 ft. tip section, maximum rating is 150,000 lbs.

Gantry must be in the highest raised position for all conditions. Ratings above heavy line require use of 5 sheave point (15 ft. or 25 ft. tip section. Ratings below heavy line are based on the use of 2 sheave point (35 ft. tip section\*). Maximum

# 9125-TC

## CRANE

### GENERAL DATA

#### BOOM — HEAVY-DUTY:

Tubular T-1 steel chords, lattice construction, pin connected.

Length — boom base section . . . . . 25 ft.  
 — boom tip section . . . . . 25 ft.

Open throat with five boom point sheaves offset from centerline, on anti-friction bearings, pitch diameter . . . . . 24 1/8"

#### BOOM — LIGHT DUTY:

Tubular T-1 steel chords, lattice construction, pin connected.

Length — boom base section . . . . . 25 ft.  
 — boom tip section . . . . . 35 ft.

Open throat with two boom point sheaves offset from centerline, on anti-friction bearings, pitch diameter . . . . . 24 1/8"

Third boom point sheave, optional extra.

#### BOOM — HAMMERHEAD:

Tubular T-1 steel chords, lattice construction, pin connected.

Length — boom base section . . . . . 25 ft.  
 — boom tip section . . . . . 15 ft.

(Limited to use with up to maximum of 200 ft. boom)

Hammerhead arrangement with five boom point sheaves on anti-friction bearings, pitch diameter . . . . . 24 1/8"

#### BOOM HOIST REEVING: 10 parts of line — spreader sheaves on anti-friction bearings.

#### HOOK BLOCK: . . . . . 42 ton

Single sheave with safety swivel hook and 3 part hoist line, standard. Additional parts of line optional extra.

#### POWER CONTROLLED LOAD LOWERING: Planetary device for lowering loads under power control. Applicable to front drum, rear drum or both, optional extra.

#### GANTRY:

High gantry, fold over type — two working and two traveling positions — power raised, standard.

High gantry, telescoping type — two working and one traveling position — power raised, optional extra.

Mast gantry, boom foot type — required for machines equipped with booms 230 ft. and over, optional extra.

#### WORKING WEIGHT:

Basic crane (including heavy duty boom and block) . . . . . 159,547 lbs.

Counterweight (included in working weight) furnished as standard . . . . . 41,000 lbs.

Additional counterweight for maximum crane rating to be used only with outriggers fully extended) optional extra . . . . . 21,000 lbs.

Front bumper counterweight (required for booms 230 ft. and longer (optional extra) . . . 27,000 lbs.

Oper. Rad. Ft.	40 Ft. Boom		50 Ft. Boom		60 Ft. Boom		70 Ft. Boom		80 Ft. Boom		90 Ft. Boom		100 Ft. Boom		110 Ft. Boom		120 Ft. Boom		130 Ft. Boom		
	Over Side	Over Rear	Over Side	Over Rear	Over Side	Over Rear	Over Side	Over Rear	Over Side	Over Rear	Over Side	Over Rear	Over Side	Over Rear	Over Side	Over Rear	Over Side	Over Rear	Over Side	Over Rear	
12	124100	124900	123800	124600	124500	125300	125000	125800	125500	126300	126000	126800	126500	127300	127000	127800	127500	128300	128000	128800	128500
15	89000	91800	88700	91500	88400	91200	89100	91900	89600	92400	90100	92900	90600	93400	91100	93900	91600	94400	92100	94900	92600
20	60000	63100	59700	62800	59400	62500	59100	62200	59800	62900	59500	62600	59200	62300	59900	63000	59600	62700	59300	62400	59400
25	44950	47750	44650	47450	44350	47150	44050	46850	43750	46550	43450	46250	43150	45950	42850	45550	42450	45250	42150	44950	42650
30	35600	38200	35450	37900	35150	37600	34850	37300	34550	37000	34250	36700	33950	36400	33650	36100	33350	35800	33050	35500	33250
35	29500	31700	29200	31400	28900	31100	28600	30800	28300	30500	28000	30200	27700	29900	27400	29600	27100	29300	26600	28800	26900
40	24950	27100	24650	26800	24350	26500	24050	26200	23750	25900	23450	25600	23150	25300	22850	25000	22550	24700	22250	24400	22400
45	21350	23100	21050	22800	20750	22500	20450	22200	20150	21900	19850	21600	19550	21300	19250	21000	18950	20700	18650	20400	18350
50	18700	20300	18400	20000	18100	19700	17800	19400	17500	19100	17200	18800	16900	18500	16600	18200	16300	17900	16000	17600	15700
60	14500	15950	14200	15650	13900	15350	13600	15050	13300	14750	13000	14450	12700	14150	12400	14150	12400	13850	12150	13850	12150
70	11500	12750	11200	12450	10900	12150	10600	11850	10300	11550	10000	11250	9700	11000	9450	10700	9150	10450	8900	10200	8650
80	9225	10350	8925	10050	8625	9750	8325	9450	8025	9150	8725	9850	8425	9550	9125	9250	8825	9950	8525	9650	9225
90	7400	8350	7100	8050	6800	7750	7400	8350	7900	8850	8450	9400	8950	9900	9450	10400	9950	10900	10450	11400	10950
100	5850	6800	5550	6500	5250	6200	5900	6650	6200	7150	6700	7650	7200	8150	7700	8650	8200	9150	8700	9650	9200

WITHOUT OUTRIGGERS

For all operating conditions and instructions refer to notes under main rating plate 32145 and 32146.

Data published herein is statistical and for information only. Performance may vary with the conditions encountered.

Manufactured and sold in conformance with U. S. Department of Commerce Commercial Standard CS-90-58.

Harnischfeger Corporation reserves the right to make changes in specifications without advance notice.

Address Inquiries to:

**HARNISCHFEGER**

Milwaukee, Wisconsin 53246



**Maximum Counterweight of 62,000 lbs.  
Ratings Over Side and Rear — Outriggers Fully Extended**

**RATED CRANE LOADS IN POUNDS — MAIN BOOM (Drawing 32J46)**

Oper. Rad. Ft.	40 Ft. Boom			50 Ft. Boom			60 Ft. Boom			70 Ft. Boom			80 Ft. Boom			90 Ft. Boom			100 Ft. Boom			110 Ft. Boom			120 Ft. Boom			130 Ft. Boom			140 Ft. Boom			150 Ft. Boom		
	Angle	Boom Pt. El.	Rating Lbs.	Angle	Boom Pt. El.	Rating Lbs.	Angle	Boom Pt. El.	Rating Lbs.	Angle	Boom Pt. El.	Rating Lbs.	Angle	Boom Pt. El.	Rating Lbs.	Angle	Boom Pt. El.	Rating Lbs.	Angle	Boom Pt. El.	Rating Lbs.	Angle	Boom Pt. El.	Rating Lbs.	Angle	Boom Pt. El.	Rating Lbs.	Angle	Boom Pt. El.	Rating Lbs.	Angle	Boom Pt. El.	Rating Lbs.			
12	82	48'-2"	280000	81	58'-0"	280000	..	..	..	..	..	..	..	..	..	..	..	..	..	..	..	..	..	..	..	..	..	..	..	..	..	..	..			
15	78	47'-5"	221000	78	57'-6"	220800	80	67'-8"	220500	..	..	..	..	..	..	..	..	..	..	..	..	..	..	..	..	..	..	..	..	..	..	..	..			
20	71	46'-1"	174600	72	56'-3"	174300	77	76'-10"	173700	..	..	..	..	..	..	..	..	..	..	..	..	..	..	..	..	..	..	..	..	..	..	..	..			
25	63	43'-10"	130000	66	54'-4"	129700	70	65'-1"	129400	73	75'-8"	129100	75	85'-10"	128800	77	96'-4"	128500	78	106'-6"	128200	..	..	..	..	..	..	..	..	..	..	..	..	..		
30	55	40'-11"	105200	60	52'-0"	104900	65	63'-1"	104600	69	74'-1"	104300	71	84'-3"	104000	73	94'-8"	103700	75	104'-3"	103400	77	115'-9"	103100	78	126'-0"	102800	..	..	..	..	..	..	..	..	
35	45	36'-4"	86500	53	48'-8"	86200	59	60'-1"	85900	64	71'-7"	85600	67	82'-3"	85300	70	93'-2"	85000	72	103'-10"	84700	74	114'-5"	84400	75	124'-5"	84100	77	135'-4"	83800	77	145'-0"	83500	78	155'-4"	83200
40	34	30'-3"	74900	45	44'-0"	74600	54	57'-2"	74300	59	68'-8"	74000	64	80'-8"	73700	67	91'-6"	73400	69	102'-1"	73100	71	112'-8"	72800	73	123'-4"	72500	74	133'-8"	72200	75	143'-11"	71900	76	154'-2"	71600
45	..	..	..	36	37'-10"	63700	47	52'-6"	63400	55	66'-0"	63100	59	77'-3"	62800	63	88'-10"	62500	66	100'-1"	62200	68	110'-8"	61900	70	121'-4"	61600	72	132'-6"	61300	73	142'-5"	61000	74	152'-10"	60700
50	..	..	..	24	28'-8"	55050	40	47'-1"	54750	49	61'-5"	54450	55	74'-2"	54150	60	86'-8"	53850	63	97'-9"	53550	65	108'-4"	53250	68	120'-0"	52950	69	130'-1"	52650	71	141'-1"	52350	72	151'-5"	52050
60	..	..	..	..	..	..	22	30'-11"	42750	37	50'-8"	42450	46	66'-2"	42150	52	79'-8"	41850	56	91'-6"	41550	60	104'-0"	41250	62	114'-8"	40950	65	126'-6"	40650	67	136'-8"	40350	68	147'-9"	40050
70	..	..	..	..	..	..	..	..	..	20	32'-2"	35200	35	54'-5"	34900	43	70'-0"	34600	49	84'-2"	34300	53	96'-5"	34000	57	109'-3"	33700	60	121'-3"	33400	62	132'-3"	33100	64	143'-7"	32800
80	..	..	..	..	..	..	..	..	..	..	..	19	34'-5"	29350	32	56'-2"	29050	41	74'-2"	28750	47	89'-1"	28450	51	101'-10"	28150	54	114'-0"	27850	57	126'-1"	27550	60	138'-8"	27250	
90	..	..	..	..	..	..	..	..	..	..	..	..	..	..	17	35'-10"	24750	31	59'-11"	24450	39	77'-9"	24150	44	92'-0"	23850	49	106'-8"	23550	52	118'-11"	23250	55	131'-6"	22950	
100	..	..	..	..	..	..	..	..	..	..	..	..	..	..	..	..	..	17	37'-6"	20000	30	63'-5"	19700	37	80'-8"	19400	43	97'-2"	19100	47	111'-0"	18800	50	123'-6"	18500	
110	..	..	..	..	..	..	..	..	..	..	..	..	..	..	..	..	..	..	..	..	16	38'-10"	17500	28	64'-8"	17200	36	84'-11"	16900	41	100'-4"	16600	45	114'-6"	16300	
120	..	..	..	..	..	..	..	..	..	..	..	..	..	..	..	..	..	..	..	..	..	..	15	39'-3"	15100	27	67'-5"	14800	34	86'-9"	14500	40	104'-11"	14200		
130	..	..	..	..	..	..	..	..	..	..	..	..	..	..	..	..	..	..	..	..	..	..	..	..	..	..	..	..	..	..	..	..	..			
140	..	..	..	..	..	..	..	..	..	..	..	..	..	..	..	..	..	..	..	..	..	..	..	..	..	..	..	..	..	..	..	..	..	..		
150	..	..	..	..	..	..	..	..	..	..	..	..	..	..	..	..	..	..	..	..	..	..	..	..	..	..	..	..	..	..	..	..	..	..		

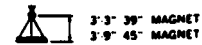
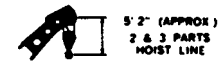
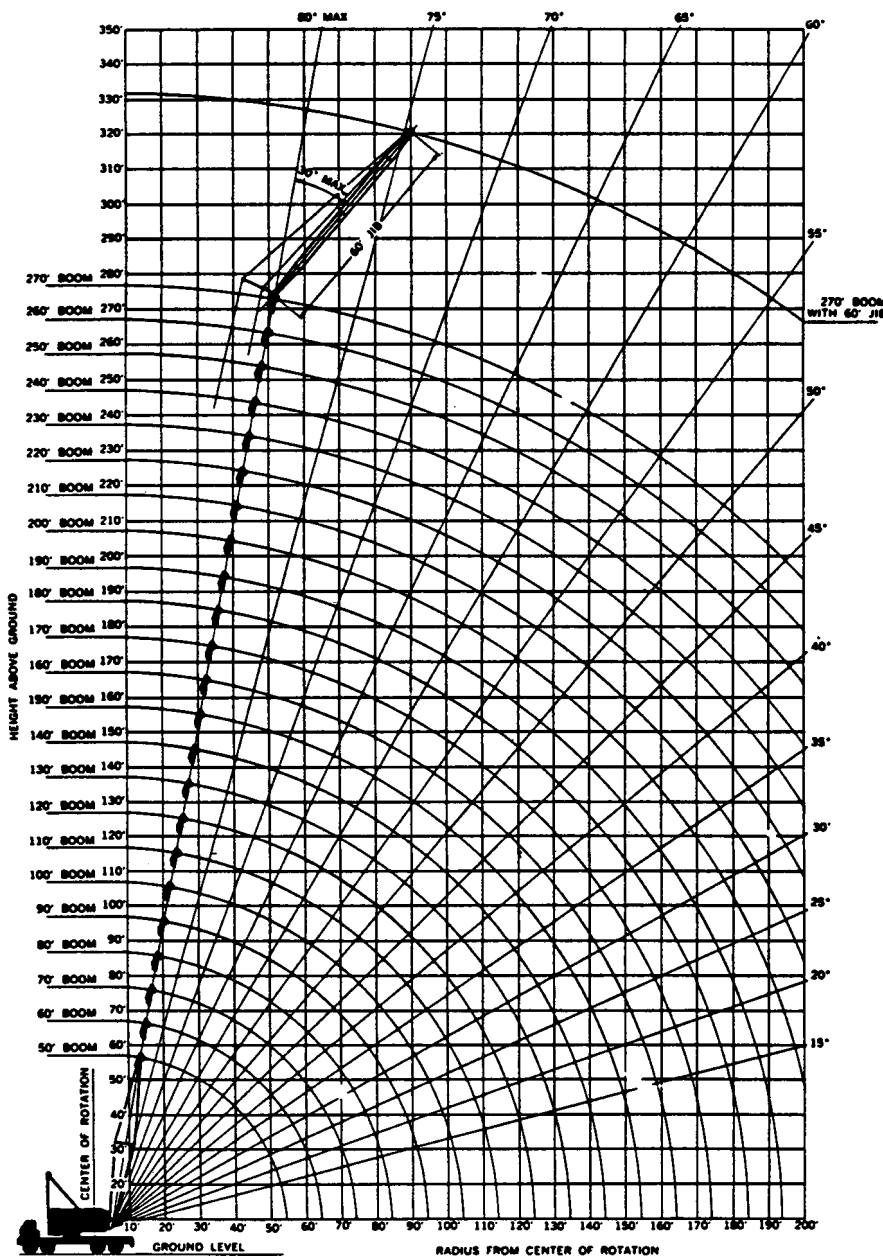
Oper. Rad. Ft.	160 Ft. Boom			170 Ft. Boom			180 Ft. Boom			190 Ft. Boom			200 Ft. Boom			210 Ft. Boom			220 Ft. Boom			230 Ft. Boom			240 Ft. Boom			250 Ft. Boom			260 Ft. Boom			270 Ft. Boom				
	Angle	Boom Pt. El.	Rating Lbs.	Angle	Boom Pt. El.	Rating Lbs.	Angle	Boom Pt. El.	Rating Lbs.	Angle	Boom Pt. El.	Rating Lbs.	Angle	Boom Pt. El.	Rating Lbs.	Angle	Boom Pt. El.	Rating Lbs.	Angle	Boom Pt. El.	Rating Lbs.	Angle	Boom Pt. El.	Rating Lbs.	Angle	Boom Pt. El.	Rating Lbs.	Angle	Boom Pt. El.	Rating Lbs.	Angle	Boom Pt. El.	Rating Lbs.					
40	77	164'-7"	71300	78	174'-11"	71000	79	185'-4"	70700	..	..	..	..	..	..	..	..	..	..	..	..	..	..	..	..	..	..	..	..	..	..	..	..					
45	75	163'-2"	60400	76	173'-8"	60100	77	184'-2"	59800	78	194'-4"	59500	78	204'-2"	59200	..	..	..	..	..	..	..	..	..	..	..	..	..	..	..	..	..	..	..				
50	73	161'-8"	51750	74	172'-2"	51450	75	182'-8"	51150	76	193'-0"	50850	77	203'-5"	50550	77	213'-4"	49250	78	223'-9"	44200	79	234'-5"	42450	..	..	..	..	..	..	..	..	..	..	..	..		
60	69	158'-0"	39750	71	169'-4"	39450	72	179'-9"	39150	73	190'-3"	38850	74	201'-1"	38550	75	211'-6"	38250	76	222'-2"	37950	76	231'-9"	37650	77	242'-7"	35400	77	252'-1"	33100	78	262'-10"	31260	..	..	..	..	..
70	66	154'-8"	32500	67	165'-2"	32200	69	177'-8"	31900	70	187'-2"	31600	71	197'-10"	31300	72	208'-4"	31000	73	218'-10"	30700	73	228'-8"	30400	74	239'-5"	30100	75	250'-2"	29800	76	260'-8"	28300	76	270'-8"	24350		
80	62	150'-1"	26950	64	161'-7"	26650	65	171'-9"	26350	67	183'-8"	26050	68	194'-2"	25750	69	204'-9"	25450	70	215'-6"	25150	71	226'-3"	24850	72	236'-8"	24550	73	247'-8"	24250	73	257'-5"	23950	74	268'-2"	22750		
90	58	144'-2"	22650	60	155'-10"	22350	62	167'-8"	22050	63	178'-1"	21750	65	190'-1"	21450	66	200'-4"	21150	67	211'-2"	20050	68	221'-10"	19750	69	232'-8"	19450	70	243'-8"	19150	71	254'-8"	19650	72	265'-5"	19350		
100	53	136'-4"	18200	56	148'-8"	17900	58	161'-2"	17600	60	173'-2"	17300	61	183'-8"	17000	63	196'-0"	16700	64	206'-3"	16400	65	217'-2"	16100	67	229'-8"	15800	67	238'-8"	15500	68	249'-8"	15200	69	261'-2"	14900		
110	49	129'-4"	16000	52	142'-8"	15700	54	154'-2"	15400	56	166'-3"	15100	58	178'-3"	14800	60	190'-4"	14500	61	201'-2"	14200	63	213'-8"	13900	64	224'-5"	13600	65	235'-3"	13300	66	245'-10"	13000	67	257'-1"	12700		
120	44	119'-9"	13900	47	133'-0"	13600	50	146'-7"	13300	53	160'-3"	13000	55	172'-6"	12700	57	184'-10"	12400	58	195'-2"	12100	60	208'-0"	11800	61	218'-8"	11500	62	229'-7"	11200	64	242'-8"	10900	65	253'-6"	10600		
130	38	106'-10"	12200	42	122'-5"	11900	46	138'-1"	11600	49	152'-0"	11300	51	163'-11"	11000	53	176'-6"	10700	55	188'-10"	10400	57	201'-5"	10100	58	212'-4"	9800	60	225'-2"	9500	61	236'-2"	9200	62	247'-2"	8900		
140	32	93'-2"	10800	37	110'-11"	10500	41	126'-8"	10200	44	140'-7"	9900	47	155'-0"	9600	50	169'-4"	9300	52	182'-2"	9000	54	194'-8"	8700	56	207'-8"	8400	57	218'-2"	8100	59	231'-8"	7800	60	242'-8"	7500		
150	24	73'-5"	8380	31	96'-1"	8080	36	114'-4"	7780	40	130'-6"	7480	43	145'-0"	7180	46	159'-7"	6880	48	172'-1"	6580	51	187'-5"	6280	53	200'-0"	5980	54	210'-9"	5680	56	224'-2"	5380	57	235'-8"	5080		
160	13	44'-1"	7500	24	77'-7"	7200	30	98'-5"	6900	35	117'-6"	6600	39	134'-6"	6300	42	149'-1"	6000	41	152'-10"	5700	47	176'-10"	5400	50	192'-6"	5100	52	205'-8"	4800	53	216'-2"	4500	55	229'-8"	4200		
170	..	..	..	13	46'-4"	6170	23	78'-9"	5870	29	102'-0"	5570	34	120'-4"	5270	38	137'-10"	4970	37	141'-0"	4670	44	168'-7"	4370	46	182'-2"	4070	49	197'-8"	3770	50	207'-7"	3470	52	221'-8"	3170		
180	..	..	..	..	..	..	13	48'-8"	4960	22	79'-6"	4660	29	105'-4"	4360	33	122'-10"	4060	32	125'-1"	3760	40	156'-4"	3460	43	172'-2"	3160	45	185'-2"	2860	47	197'-7"	2560	49	212'-7"	2260		
190	..	..	..	..	..	..	..	..	..	12	47'-7"	3840	22	83'-4"	3540	28	107'-0"	3240	27	108'-4"	2940	36	143'-10"	2640	39	158'-6"	2340	42	175'-8"	2040	44	189'-1"	1740	47	206'-1"	1440		
200	..	..	..	..	..	..	..	..	..	..	..	12	49'-9"	2930	21	83'-6"	2630	20	83'-7"	2330	31	126'-10"	2030	35	146'-1"	1730	39	165'-10"	1430	41	175'-7"	1130	44	196'-1"	830			

Gross crane ratings shown are for units with 21,000 lbs. additional counterweight and do not exceed 85% tipping loads. Ratings are based on outriggers extended to a fulcrum point 10'-10" from center of carrier. Areas on plate where no ratings are shown operation is not intended or approved. Ratings above heavy line require use of 5 sheave point (15 ft. or 25 ft. tip section). Ratings below heavy line are based on use of 2 sheave point (35 ft. tip section\*). These ratings reduced by 1000 lbs. when using 5 sheave point. Ratings are contingent upon the machine being equipped with the proper PAH boom. Ratings at radii of 20 ft. or less are based on strength of materials. Booms 230 ft. and over require 2 sheave point (35 ft.



# P&H 9125-TC

## 140 TON TRUCK CRANE



Your versatile P & H 9125-TC adapts readily to your special operating needs through a choice of counterweights and boom tips. This brochure contains these crane rating charts:

### Heavy and Light Duty Tapered Tip Boom:

1. 41,000 lbs. counterweight - on rubber  
50 to 130 foot boom lengths
2. 41,000 lbs. counterweight - on outriggers  
50 to 250 foot boom lengths
3. 62,000 lbs. counterweight - on outriggers  
50 to 270 foot boom lengths

### Hammerhead Tip Boom:

4. 41,000 lbs. counterweight - on rubber  
40 to 130 foot boom lengths
5. 41,000 lbs. counterweight - on outriggers  
40 to 180 foot boom lengths
6. 62,000 lbs. counterweight - on outriggers  
40 to 180 foot boom lengths

### Special Container Tip Boom:

7. 62,000 lbs. counterweight - on outriggers  
120 to 160 foot boom lengths

### Jib Ratings

8. All boom combinations except container

This P & H Model 9125-TC meets the requirements of ANSI B30.5 1968. Boom structure has been tested per SAE J 987. Machine stability has been tested per SAE J 765.

# P&H. 9125-TC

the eight charts in this brochure illustrate the range and lifting prowess that has made the 9125-TC the "standard of the industry", the most widely used crane in its class

with 41,000 lbs. counterweight

rated crane loads in pounds — main boom — without outriggers

**1**

Oper Rad Ft	Angle	50 Ft. Boom		Angle	60 Ft. Boom		Angle	70 Ft. Boom		Angle	80 Ft. Boom		Angle	90 Ft. Boom		Angle	100 Ft. Boom		
		Over Side	Over Rear		Over Side	Over Rear		Over Side	Over Rear		Over Side	Over Rear		Over Side	Over Rear		Over Side	Over Rear	
12	81		75,228							WHEN USING BOOMS WITH A 25 FT TIP SECTION, 60 FT TO 130 FT LONG, DEDUCT 1,000 LBS									
15	78		63,984	80		63,234													
20	72	41.652	50,844	75	40.994	50,156	77	40.643	49,787										
25	66	33.689	41,876	70	33.068	41,229	73	32.738	40,884	75	32.384	40,516	77	31.763	39,869	78	31.392	39,485	
30	60	28.066	34,300	65	27.471	34,764	69	27.156	34,437	71	26.817	34,085	73	26.222	33,468	75	25.863	33,098	
35	53	23.885	28,100	59	23.309	28,800	64	23.005	28,700	67	22.677	28,500	70	22.102	28,200	72	21.751	27,900	
40	45	20.654	23,700	54	20.094	24,400	59	19.798	24,200	64	19.478	24,000	67	18.918	23,700	69	18.575	23,400	
45	36	18.083	20,200	47	17.535	20,900	55	17.246	20,800	59	16.933	20,600	63	16.385	20,300	66	16.047	20,000	
50	24	15.700	17,600	40	15.451	18,300	49	15.167	18,100	55	14.860	17,900	60	14.321	17,600	63	13.988	17,300	
60				22	12.260	14,300	37	11.985	14,100	46	11.686	13,900	52	11.162	13,600	56	10.836	13,300	
70							20	9.664	11,400	35	9.371	11,100	43	8.858	10,800	49	8.536	10,500	
80										19	7.608	9,100	32	7.103	8,800	41	6.785	8,500	
90													17	5.722	7,250	31	5.407	6,900	
100																17	4.295	5,700	

## PCSA CLASS 12-570 tapered tip sections

**2**

Oper Rad Ft	Angle	50 Ft. Boom		Angle	60 Ft. Boom		Angle	70 Ft. Boom		Angle	80 Ft. Boom		Angle	90 Ft. Boom		Angle	100 Ft. Boom		Angle	110 Ft. Boom		
		Boom Pt. El.	Rating Lbs.		Boom Pt. El.	Rating Lbs.		Boom Pt. El.	Rating Lbs.		Boom Pt. El.	Rating Lbs.		Boom Pt. El.	Rating Lbs.		Boom Pt. El.	Rating Lbs.		Boom Pt. El.	Rating Lbs.	Boom Pt. El.
12	81	58.0	280,000				RATINGS WITHIN THIS BOX ARE LIMITED BY STRENGTH OF MATERIALS AND REQUIRE THE USE OF A 25 FOOT TIP SECTION WITH 5 SHEAVES.															
15	78	57.5	210,500	80	67.6	196,000																
20	72	56.2	165,200	75	66.6	164,900	77	76.8	164,600													
25	66	54.3	119,600	70	65.1	120,300	73	75.6	120,000	75	85.8	119,700	77	96.3	119,400	78	106.5	119,100				
30	60	52.0	88,500	65	63.1	89,200	69	74.1	88,900	71	84.2	88,600	73	94.6	88,300	75	104.2	88,000	77	115.7	87,700	
35	53	48.6	69,300	59	60.1	70,000	64	71.6	69,700	67	82.2	69,400	70	93.1	69,100	72	103.8	68,800	74	114.4	68,500	
40	45	44.0	57,000	54	57.1	57,700	59	68.6	57,400	64	80.6	57,100	67	91.5	56,800	69	102.1	56,500	71	112.6	56,200	
45	36	37.0	48,500	47	52.5	49,200	55	66.0	48,900	59	77.2	48,600	63	88.8	48,300	66	100.1	48,000	68	110.6	47,700	
50	24	28.0	41,750	40	48.2	42,450	49	61.4	42,150	55	74.1	41,850	60	86.6	41,550	63	97.7	41,250	65	108.3	40,950	
60				22	30.9	32,900	37	50.6	32,600	46	66.1	32,300	52	79.6	32,000	56	91.5	31,700	60	104.0	31,400	
70							20	33.4	27,000	35	54.4	26,700	43	70.0	26,400	49	84.1	26,100	53	96.4	25,800	
80										19	34.4	22,350	32	58.0	22,050	41	74.1	21,750	47	89.1	21,450	
90													17	35.8	18,650	31	59.9	18,350	39	77.7	18,050	
100																17	37.5	15,800	30	63.4	15,500	
110																			16	38.8	13,400	
120																						
130																						
140																						
150																						
160																						
170																						
180																						
190																						
200																						

**WARNING: MAXIMUM RATING FOR 35 FT. 3 SHEAVE TIP IS 150,000 LBS.**





# PCSA CLASS 12-736

## with 62,000 lbs. counterweight

rated crane loads in pounds — main boom (69" w. x 69" d.) in over side and over rear work areas with outriggers fully extended and set

Oper Rad Ft	50 Ft Boom		60 Ft Boom		70 Ft Boom		80 Ft Boom		90 Ft Boom		100 Ft Boom		110 Ft Boom		120 Ft Boom		130 Ft Boom		140 Ft Boom		150 Ft Boom		160 Ft Boom		170 Ft Boom		180 Ft Boom		190 Ft Boom		200 Ft Boom		Oper Rad Ft																																																																																																																																																																																																																																																																																																																																																																																																																																																																																																																																																																																																																																																																																																																																																												
	Boom Pt. El.	Rating Lbs.	Boom Pt. El.	Rating Lbs.	Boom Pt. El.	Rating Lbs.	Boom Pt. El.	Rating Lbs.	Boom Pt. El.	Rating Lbs.	Boom Pt. El.	Rating Lbs.	Boom Pt. El.	Rating Lbs.	Boom Pt. El.	Rating Lbs.	Boom Pt. El.	Rating Lbs.	Boom Pt. El.	Rating Lbs.	Boom Pt. El.	Rating Lbs.	Boom Pt. El.	Rating Lbs.	Boom Pt. El.	Rating Lbs.	Boom Pt. El.	Rating Lbs.	Boom Pt. El.	Rating Lbs.	Boom Pt. El.	Rating Lbs.																																																																																																																																																																																																																																																																																																																																																																																																																																																																																																																																																																																																																																																																																																																																																													
12	58.0	280,000																															12																																																																																																																																																																																																																																																																																																																																																																																																																																																																																																																																																																																																																																																																																																																																																												
15	57.5	220,800	80	67.6	195,000																												15																																																																																																																																																																																																																																																																																																																																																																																																																																																																																																																																																																																																																																																																																																																																																												
20	56.2	174,200	75	66.6	174,000	77	75.8	166,500																									20																																																																																																																																																																																																																																																																																																																																																																																																																																																																																																																																																																																																																																																																																																																																																												
25	55	128,000	70	65.1	125,400	73	75.6	129,100	75	85.8	128,600	77	96.3	128,500	78	106.5	128,200																	25																																																																																																																																																																																																																																																																																																																																																																																																																																																																																																																																																																																																																																																																																																																																																											
30	50	63,800	65	63.1	64,600	69	74.1	74,300	71	84.2	74,050	73	94.6	73,700	75	104.2	73,400	77	115.7	73,100	78	126.0	73,800											30																																																																																																																																																																																																																																																																																																																																																																																																																																																																																																																																																																																																																																																																																																																																																											
35	53	48.6	65,200	59	60.1	65,900	64	71.6	66,000	67	82.2	65,300	70	93.1	65,000	72	103.8	64,700	74	114.4	64,400	75	124.4	64,100	77	135.3	63,800	77	145.0	63,500	78	155.3	63,200	81,400	35																																																																																																																																																																																																																																																																																																																																																																																																																																																																																																																																																																																																																																																																																																																																																										
40	45	42.0	73,600	54	57.1	74,300	59	62.6	74,000	64	73.7	73,700	67	81.5	73,400	69	92.1	73,100	71	102.6	72,800	73	113.4	72,500	74	123.4	72,200	75	133.9	71,900	76	144.9	71,600	77	154.1	71,300	78	164.6	71,000	79	174.9	70,700	80	185.3	70,400	81	195.6	70,100	82	205.9	69,800	83	216.2	69,500	84	226.5	69,200	85	236.8	68,900	86	247.1	68,600	87	257.4	68,300	88	267.7	68,000	89	278.0	67,700	90	288.3	67,400	91	298.6	67,100	92	308.9	66,800	93	319.2	66,500	94	329.5	66,200	95	339.8	65,900	96	350.1	65,600	97	360.4	65,300	98	370.7	65,000	99	381.0	64,700	100	391.3	64,400	101	401.6	64,100	102	411.9	63,800	103	422.2	63,500	104	432.5	63,200	105	442.8	62,900	106	453.1	62,600	107	463.4	62,300	108	473.7	62,000	109	484.0	61,700	110	494.3	61,400	111	504.6	61,100	112	514.9	60,800	113	525.2	60,500	114	535.5	60,200	115	545.8	59,900	116	556.1	59,600	117	566.4	59,300	118	576.7	59,000	119	587.0	58,700	120	597.3	58,400	121	607.6	58,100	122	617.9	57,800	123	628.2	57,500	124	638.5	57,200	125	648.8	56,900	126	659.1	56,600	127	669.4	56,300	128	679.7	56,000	129	689.9	55,700	130	700.2	55,400	131	710.5	55,100	132	720.8	54,800	133	731.1	54,500	134	741.4	54,200	135	751.7	53,900	136	762.0	53,600	137	772.3	53,300	138	782.6	53,000	139	792.9	52,700	140	803.2	52,400	141	813.5	52,100	142	823.8	51,800	143	834.1	51,500	144	844.4	51,200	145	854.7	50,900	146	865.0	50,600	147	875.3	50,300	148	885.6	50,000	149	895.9	49,700	150	906.2	49,400	151	916.5	49,100	152	926.8	48,800	153	937.1	48,500	154	947.4	48,200	155	957.7	47,900	156	968.0	47,600	157	978.3	47,300	158	988.6	47,000	159	998.9	46,700	160	1009.2	46,400	161	1019.5	46,100	162	1029.8	45,800	163	1040.1	45,500	164	1050.4	45,200	165	1060.7	44,900	166	1071.0	44,600	167	1081.3	44,300	168	1091.6	44,000	169	1101.9	43,700	170	1112.2	43,400	171	1122.5	43,100	172	1132.8	42,800	173	1143.1	42,500	174	1153.4	42,200	175	1163.7	41,900	176	1174.0	41,600	177	1184.3	41,300	178	1194.6	41,000	179	1204.9	40,700	180	1215.2	40,400	181	1225.5	40,100	182	1235.8	39,800	183	1246.1	39,500	184	1256.4	39,200	185	1266.7	38,900	186	1277.0	38,600	187	1287.3	38,300	188	1297.6	38,000	189	1307.9	37,700	190	1318.2	37,400	191	1328.5	37,100	192	1338.8	36,800	193	1349.1	36,500	194	1359.4	36,200	195	1369.7	35,900	196	1380.0	35,600	197	1390.3	35,300	198	1400.6	35,000	199	1410.9	34,700	200	1421.2	34,400	201	1431.5	34,100	202	1441.8	33,800	203	1452.1	33,500	204	1462.4	33,200	205	1472.7	32,900	206	1483.0	32,600	207	1493.3	32,300	208	1503.6	32,000	209	1513.9	31,700	210	1524.2	31,400	211	1534.5	31,100	212	1544.8	30,800	213	1555.1	30,500	214	1565.4	30,200	215	1575.7	29,900	216	1586.0	29,600	217	1596.3	29,300	218	1606.6	29,000	219	1616.9	28,700	220	1627.2	28,400	221	1637.5	28,100	222	1647.8	27,800	223	1658.1	27,500	224	1668.4	27,200	225	1678.7	26,900	226	1689.0	26,600	227	1699.3	26,300	228	1709.6	26,000	229	1719.9	25,700	230	1730.2	25,400	231	1740.5	25,100	232	1750.8	24,800	233	1761.1	24,500	234	1771.4	24,200	235	1781.7	23,900	236	1792.0	23,600	237	1802.3	23,300	238	1812.6	23,000	239	1822.9	22,700	240	1833.2	22,400	241	1843.5	22,100	242	1853.8	21,800	243	1864.1	21,500	244	1874.4	21,200	245	1884.7	20,900	246	1895.0	20,600	247	1905.3	20,300	248	1915.6	20,000	249	1925.9	19,700	250	1936.2	19,400	251	1946.5	19,100	252	1956.8	18,800	253	1967.1	18,500	254	1977.4	18,200	255	1987.7	17,900	256	1998.0	17,600	257	2008.3	17,300	258	2018.6	17,000	259	2028.9	16,700	260	2039.2	16,400	261	2049.5	16,100	262	2059.8	15,800	263	2070.1	15,500	264	2080.4	15,200	265	2090.7	14,900	266	2101.0	14,600	267	2111.3	14,300	268	2121.6	14,000	269	2131.9	13,700	270	2142.2	13,400	271	2152.5	13,100	272	2162.8	12,800	273	2173.1	12,500	274	2183.4	12,200	275	2193.7	11,900	276	2204.0	11,600	277	2214.3	11,300	278	2224.6	11,000	279	2234.9	10,700	280	2245.2	10,400	281	2255.5	10,100	282	2265.8	9,800	283	2276.1	9,500	284	2286.4	9,200	285	2296.7	8,900	286	2307.0	8,600	287	2317.3	8,300	288	2327.6	8,000	289	2337.9	7,700	290	2348.2	7,400	291	2358.5	7,100	292	2368.8	6,800	293	2379.1	6,500	294	2389.4	6,200	295	2399.7	5,900	296	2410.0	5,600	297	2420.3	5,300	298	2430.6	5,000	299	2440.9	4,700	300	2451.2	4,400	301	2461.5	4,100	302	2471.8	3,800	303	2482.1	3,500	304	2492.4	3,200	305	2502.7	2,900	306	2513.0	2,600	307	2523.3	2,300	308	2533.6	2,000	309	2543.9	1,700	310	2554.2	1,400	311	2564.5	1,100	312	2574.8	800	313	2585.1	500	314	2595.4	200	315	2605.7		316	2616.0		317	2626.3		318	2636.6		319	2646.9		320	2657.2	

WARNING: Maximum rating for 35 ft. 3 sheave tip is 150,000 lbs.

Oper Rad Ft	210 Ft Boom		220 Ft Boom		230 Ft Boom		240 Ft Boom		250 Ft Boom		260 Ft Boom		270 Ft Boom		Oper Rad Ft												
	Boom Pt. El.	Rating Lbs.	Boom Pt. El.	Rating Lbs.	Boom Pt. El.	Rating Lbs.	Boom Pt. El.	Rating Lbs.	Boom Pt. El.	Rating Lbs.	Boom Pt. El.	Rating Lbs.	Boom Pt. El.	Rating Lbs.													
12														12													
15														15													
20														20													
25														25													
30														30													
35														35													
40														40													
45														45													
50	77	213.3	46.500	78	223.7	42.900	79	234.4	39.400					50													
60	75	211.5	38.250	76	222.1	37.950	77	231.7	36.000	77	242.5	33.100	77	252.1	30.300	78	262.8	25.500								60	
70	72	208.3	31.000	73	218.8	30.700	73	228.6	30.400	74	239.4	29.700	75	250.1	24.900	76	260.6	22.700	76	270.8	20.600						70
80	69	204.7	25.450	70	215.5																						





# with 25 ft. container tip and 62,000 lbs. counterweight

Ratings apply to full 360° operation when front float is in place, otherwise only over sides and rear.  
Use insert arrangement as shown in Boom Make-Up Chart for 25 Ft. Tip Section.

Gantry must be in raised position for all operating conditions.  
Travel speed in excess of 5 M.P.H. with machine counterweight exceeds tire manufacturers load ratings.

7

Oper. Rad. Ft.	Angle	120 Ft. Boom		Angle	130 Ft. Boom		Angle	140 Ft. Boom		Angle	150 Ft. Boom		Angle	160 Ft. Boom	
		Boom Pt. El.	Rating Lbs.		Boom Pt. El.	Rating Lbs.		Boom Pt. El.	Rating Lbs.		Boom Pt. El.	Rating Lbs.		Boom Pt. El.	Rating Lbs.
30	78	126'-0"	101,800												
35	75	124'-5"	83,100	77	135'-4"	82,800	77	145'-0"	82,500	78	155'-4"	82,200			
40	73	123'-4"	71,500	74	133'-8"	71,200	75	143'-11"	70,900	76	154'-2"	70,600	77	164'-7"	70,300
45	70	121'-4"	60,800	72	132'-6"	60,300	73	142'-5"	60,000	74	152'-10"	59,700	75	163'-2"	59,400
50	68	120'-0"	51,950	69	130'-1"	51,650	71	141'-1"	51,350	72	151'-5"	51,050	73	161'-8"	50,750
60	62	114'-8"	39,950	65	126'-6"	39,650	67	136'-8"	39,350	68	147'-9"	39,050	69	158'-0"	38,750
70	57	109'-3"	32,700	60	121'-3"	32,400	62	132'-3"	32,100	64	143'-7"	31,800	66	154'-8"	31,500
80	51	101'-10"	27,150	54	114'-0"	26,850	57	126'-1"	26,550	60	138'-8"	26,250	62	150'-1"	25,950
90	44	93'-4"	22,850	49	106'-8"	22,550	52	120'-0"	22,250	55	131'-6"	21,950	58	144'-2"	21,650
100	37	80'-8"	18,400	43	97'-2"	18,100	47	111'-0"	17,800	50	124'-10"	17,500	53	136'-4"	17,200
110	28	66'-2"	16,200	36	84'-11"	15,900	41	100'-4"	15,600	45	114'-6"	15,300	49	129'-4"	15,000
120	15	41'-2"	14,100	27	67'-5"	13,800	34	88'-3"	13,500	40	104'-11"	13,200	44	119'-9"	12,900
130				15	41'-9"	12,100	26	70'-9"	11,800	33	90'-2"	11,500	38	106'-10"	11,200
140							14	43'-9"	10,400	25	73'-3"	10,100	32	93'-2"	9,800
150										14	44'-5"	7,680	24	73'-5"	7,380
160													13	44'-1"	6,500

rated crane loads in pounds — main boom (69" w. x 69" d.) in over side and over rear work areas with outriggers fully extended and set

SINGLE DRUM OPERATION				
Parts of Line	1	2	3	4
Max. Load-Pounds	25,500	51,000	76,500	102,000
P&H TYPE 25 WIRE ROPE 1 INCH DIA.				
DOUBLE DRUM OPERATION				
Parts of Line	1	2	3	4
Max. Load-Pounds	10,500	21,000	31,500	42,000

P&H SINGLE SHEAVE BLOCK	790 LBS.
P&H TWO SHEAVE BLOCK	840 LBS.

**WARNING:** When machine is equipped with 62,000 lbs. of counterweight, machine will tip over when upper is revolved over the side unless outriggers are fully extended and set.

25 FT. TIP SECTION							
BOOM LENGTH FT.	BOOM MAKE-UP ARRANGEMENT CHART	APPROX. INSERT LENGTHS	BOOM LENGTH FT.	APPROXIMATE MID-POINT CONNECTION UP BOOM FROM BOOM FOOT PIN			
				ADJUST 908T116 MID-POINT ROPE LENGTH $Q_1$ TO $Q_2$ PIN, TO			
100	Base - B - C - Tip	Base-25	210	105	78-2	*MID-POINT DEFLECTION RANGE (MIN. and MAX.)	
110	Base - A - B - C - Tip		FT.	FT.	FT.	FT.-IN.	INCHES
120	Base - B - D - Tip	A-10	220	115	88-0	10.5 to 13.5	Base - A - B - D - C - D - Tip
130	Base - C - D - Tip		FT.	FT.	FT.	FT.-IN.	INCHES
140	Base - A - C - D - Tip	B-20	230	125	98-0	10.75 to 14.25	Base - B - B - D - C - D - Tip
150	Base - B - C - D - Tip		FT.	FT.	FT.	FT.-IN.	INCHES
160	Base - A - B - C - D - Tip	C-30	240	115	88-0	11.5 to 15.0	Base - D - D - C - D - Tip
170	Base - B - D - D - Tip		FT.	FT.	FT.	FT.-IN.	INCHES
180	Base - C - D - D - Tip	D-50	250	125	98-0	11.75 to 15.5	Base - A - C - D - D - D - Tip
190	Base - A - C - D - D - Tip		FT.	FT.	FT.	FT.-IN.	INCHES
200	Base - B - C - D - D - Tip	Tip-25				12.25 to 16.0	Base - B - C - D - D - D - Tip

\*When erecting boom, adjust mid-point turnbuckles to limit mid-point deflection within specified mid-point deflection range.

35 FT. TIP SECTION							
BOOM LENGTH FT.	BOOM MAKE-UP ARRANGEMENT CHART	APPROX. INSERT LENGTHS	BOOM LENGTH FT.	APPROXIMATE MID-POINT CONNECTION UP BOOM FROM BOOM FOOT PIN			
				ADJUST 908T116 MID-POINT ROPE LENGTH $Q_1$ TO $Q_2$ PIN, TO			
100	Base - A - C - Tip	Base-25	210	105	78-5	*MID-POINT DEFLECTION RANGE (MIN. and MAX.)	
110	Base - B - C - Tip		FT.	FT.	FT.	FT.-IN.	INCHES
120	Base - A - B - C - Tip	A-10	220	105	78-5	10.5 to 13.5	Base - D - C - B - D - Tip
130	Base - B - D - Tip		FT.	FT.	FT.	FT.-IN.	INCHES
140	Base - C - D - Tip	B-20	230	125	98-2	10.75 to 14.25	Base - A - B - D - C - D - Tip
150	Base - A - C - D - Tip		FT.	FT.	FT.	FT.-IN.	INCHES
160	Base - B - C - D - Tip	C-30	240	125	98-2	11.5 to 15.0	Base - D - D - B - D - Tip
170	Base - A - B - C - D - Tip		FT.	FT.	FT.	FT.-IN.	INCHES
180	Base - B - D - D - Tip	D-50	250	115	88-5	11.75 to 15.5	Base - D - C - D - Tip
190	Base - C - D - D - Tip		FT.	FT.	FT.	FT.-IN.	INCHES
200	Base - A - C - D - D - Tip	Tip-35				12.25 to 16.0	Base - A - C - D - D - D - Tip

\*When erecting boom, adjust mid-point turnbuckles to limit mid-point deflection within specified mid-point deflection range.

**HOOK BLOCKS:**

Block Capacity	Number Sheaves	Cable Size	Cable to Sheave Ratio	Miller Block Weight	Johnson Block Weight
30,000 lb. (13,608 kg)	1	1"	16.5 to 1	555 lb. (251.4 kg)	580 lb. (263 kg)
30,000 lb. (13,608 kg)	— Weighted hook	—	—	594 lb. (269.1 kg)	740 lb. (335.7 kg)
60,000 lb. (27,180 kg)	1	1"	16.5 to 1	575 lb. (260.5 kg)	606 lb. (274.9 kg)
90,000 lb. (40,770 kg)	1	1"	18.375 to 1	790 lb. (357.9 kg)	911 lb. (413.2 kg)
140,000 lb. (63,420 kg)	2	1"	21.5 to 1	1745 lb. (790.5 kg)	1700 lb. (771 kg)
200,000 lb. (90,600 kg)	3	1"	19.22 to 1	2530 lb. (1146.1 kg)	2644 lb. (1199.3 kg)
250,000 lb. (113250 kg)	4	1"	21.5 to 1	2938 lb. (1330.9 kg)	3050 lb. (1383.5 kg)
280,000 lb. (126840 kg)	5	1"	21.5 to 1	3250 lb. (1472.3 kg)	3474 lb. (1575.8 kg)

**WEIGHTS:**

Total — Complete machine less cable and boom — 158,420 lb.  
(71,859 kg)

Carrier — Including turret, hydraulic outriggers, floats, roller circle and standard tires — 66,200 lbs. (30,028 kg).

Upper machine — Including counterweight and gantry.  
92,220 lb. (41,831 kg)

Mast — 1989 lb. (901 kg)

Gantry — 3321 lb. (1504 kg)

Upper — Underslung counterweight — 41000 lb. (18573 kg)

Upper — Bustle counterweight — 21000 lbs. (9513 kg)

Boom:

Base — 3114 lb. (1413 kg)

Inserts — 10 ft. — 845 lb. (368 kg)

20 ft. — 1290 lb. (561 kg)

30 ft. — 1660 lb. (722 kg)

50 ft. — 2680 lb. (1166 kg)

Tip — 4124 lb. (1794 kg)

Jib:

Base — 365 lb. (165.3 kg)

Inserts — 10 ft. (3.0 m) — 213 lb. (96.5 kg)

20 ft. (6.1 m) — 373 lb. (169 kg)

30 ft. (9.1 m) — 515 lb. (233.3 kg)

Tip — 510 lb. (231 kg)

**PERFORMANCE:****(Based on Cummins NTC(A)-350 Engine)**

**ON HIGHWAY:** 15 forward speeds, 3 reverse speeds. Performance in highest and lowest gear based on engine @ full load RPM and 120,000# (54432 kg) GVW (class I, good surface road). (Rockwell Axles). Lowest Gear: 3.8 MPH (6.1 km/h) to 21.8 percent grade. Highest Gear: 41.3 MPH (66.5 km/h) to 0.6 percent grade.

**OFF HIGHWAY:** 5 forward speeds, 1 reverse speed. Performance in lowest gear ratio based on engine @ max. torque RPM and 120,000# (54432 kg) GVW (class II road). (Rockwell Axles). 1.2 MPH (1.7 FPS) (1.9 km/h) to 30.0 percent grade.

